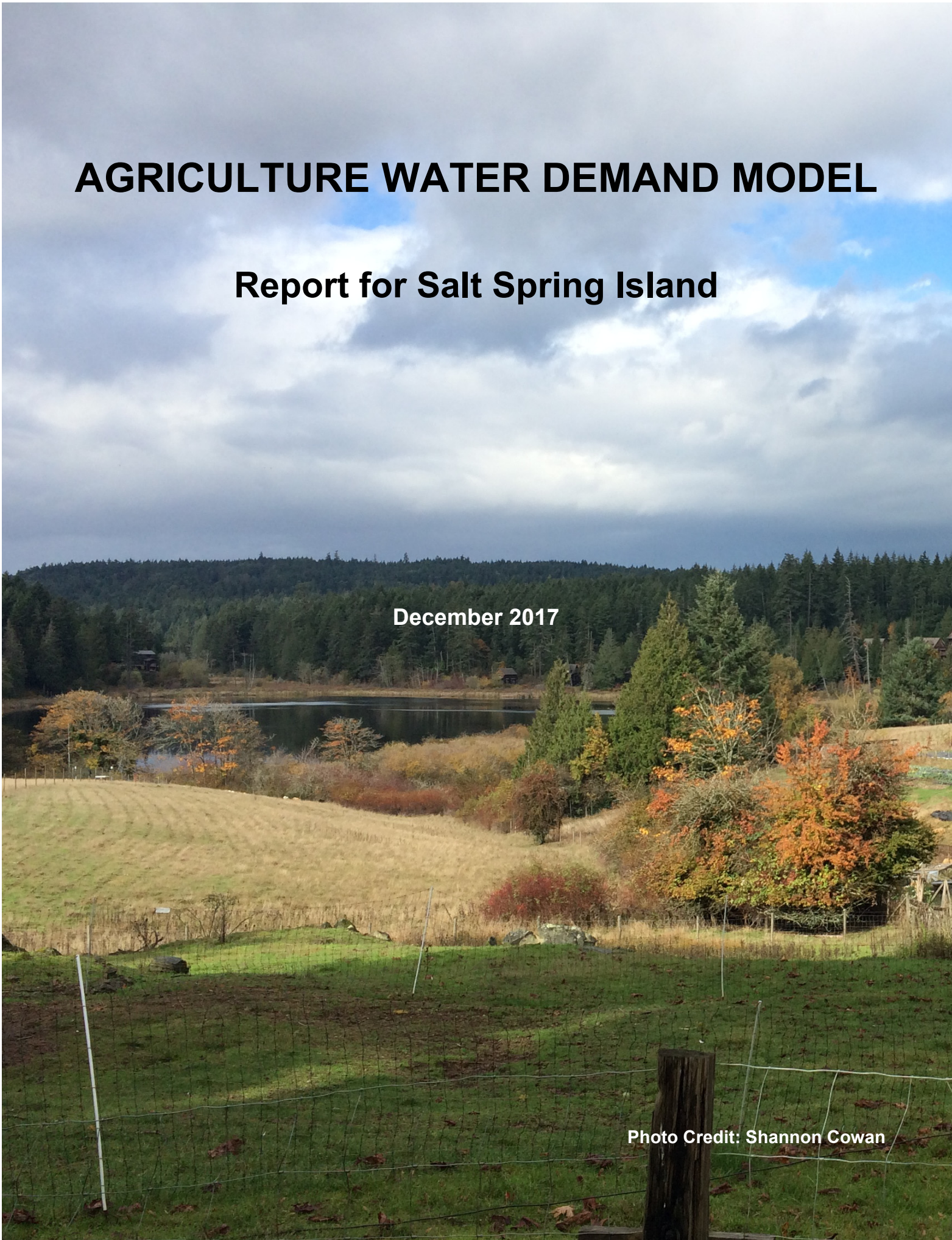


AGRICULTURE WATER DEMAND MODEL

Report for Salt Spring Island

December 2017

Photo Credit: Shannon Cowan



AGRICULTURE WATER DEMAND MODEL

Report for Salt Spring Island

December 2017

Authors:

Ted van der Gulik, P.Eng.

President
Partnership for Water Sustainability in BC
Abbotsford, BC

Stephanie Tam, P.Eng.

Water Management Engineer
B.C. Ministry of Agriculture
Innovation and Adaption Services Branch
Abbotsford, BC

Funding for this project has been provided in part by the Governments of Canada and British Columbia through the Canada-BC Agri-Innovation Program under *Growing Forward 2*, a federal-provincial-territorial initiative. The program is delivered by the Investment Agriculture Foundation of BC.



DISCLAIMER

The data that is presented in this report provides the best estimates for agriculture water demand that can be generated at this time. While every effort has been made to ensure the accuracy and completeness of the information, the information should not be considered as final. The Governments of Canada and British Columbia are committed to working with industry partners. Opinions expressed in this document are those of [the authors] and not necessarily those of the Governments of Canada and British Columbia, the Investment Agriculture Foundation of BC, or other funding partners identified above.

Table of Contents

Table of Contents	3
Acknowledgements	5
Background	6
Methodology	7
Cadastre.....	8
Land Use Survey.....	8
Soil Information	10
Climate Information	11
Model Calculations	12
Crop	12
Irrigation	12
Soil	12
Climate	13
Agricultural Water Demand Equation	13
Livestock Water Use	18
Definition and Calculation of Individual Terms Used in the Irrigation Water Demand Equation	19
Growing Season Boundaries.....	19
Evapotranspiration (ET_o)	21
Availability Coefficient (AC)	21
Rooting Depth (RD).....	21
Stress Factor (stressFactor)	22
Available Water Storage Capacity (AWSC).....	22
Maximum Soil Water Deficit (MSWD).....	22
Deep Percolation Factor (SoilpercFactor)	22
Maximum Evaporation Factor (maxEvaporation)	23
Irrigation Efficiency (I_e)	23
Soil Water Factor (swFactor).....	23
Early Season Evaporation Factor (earlyEvaporationFactor)	23
Crop Coefficient (K_c).....	23
Growing Degree Days (GDD).....	24
Frost Indices.....	24
Corn Heat Units (CHU).....	24
Corn Season Start and End.....	25
Tsum Indices	25
Wet/Dry Climate Assessment.....	25
Groundwater Use	25

Land Use Results	26
Agricultural Water Demand Results	28
Annual Crop Water Demand – Tables A and B.....	28
Annual Water Demand by Irrigation System – Table C.....	28
Annual Water Demand by Soil Texture – Table D.....	28
Annual Water Demand by Aquifer – Table E.....	28
Irrigation Management Factors – Table F.....	28
Deep Percolation – Table G.....	30
Improved Irrigation Efficiency and Good Management – Table H.....	30
Livestock Water Use – Table I.....	30
Climate Change Water Demand for 2050 – Table J.....	30
Agricultural Buildout Crop Water Demand Using 2003 Climate Data – Table K.....	32
Agricultural Buildout Crop Water Demand for 2050 – Table L.....	33
Irrigation Systems Used for the Buildout Scenario for 2003 – Table M.....	34
Water Demand for the Buildout Area by Aquifer 2003 Climate Data – Table N.....	34
Literature	35
Appendix Tables	36

List of Figures

Figure 1	Map of Salt Spring Island (SSI).....	6
Figure 2	Map of the Project Area Overlaid with Map Sheets.....	7
Figure 3	Land Use Survey.....	8
Figure 4	GIS Map Sheet.....	9
Figure 5	Cadastral with Polygons.....	9
Figure 6	GIS Model Graphics.....	10
Figure 7	Climate Stations in the Project Area.....	11
Figure 8	Water Areas in the Project Area.....	27
Figure 9	Land Parcels in the Project Area.....	27
Figure 10	Annual ET and Effective Precipitation in 2050's.....	31
Figure 11	Future Irrigation Demand for All Outdoor Uses in the Okanagan in Response to Observed Climate Data (Actuals) and Future Climate Data Projected from a Range of Global Climate Models.....	32
Figure 12	Irrigation Expansion Potential for the Project Area.....	33

List of Tables

Table 1	Livestock Water Demand (Litres/day).....	18
Table 2	Overview of the Land and Inventoried Area.....	26
Table 3	Summary of Primary Agricultural Activities within the ALR where Primary Land Use is agriculture in the Project Area.....	26
Table 4	Irrigation Management Factors.....	29

Acknowledgements

The Ministry of Agriculture acknowledges the work done by:

- **Ron Fretwell**
Program Developer
RHF Systems Ltd.
- **Denise Neilsen**
Research Scientist
Summerland Research and Development Centre
Agriculture and Agri-Food Canada

in the original development of the model algorithms, climate change scenarios and model development. Without their effort, the development of the model would not have been possible.

There are over twenty people that have been involved with the preparation and collection of data for the development of the Agriculture Water Demand Model in the project area. The authors wish to express appreciation to the following individuals for their contribution for the tasks noted.

Alex Cannon	Environment and Climate Change Canada	Climate data downscaling
Bill Taylor	Environment and Climate Change Canada	Climate data layer
Corrine Roesler	Ministry of Agriculture	GIS data coordination
Sam Lee	Ministry of Agriculture	GIS data preparation
Derek Masselink	Ministry of Agriculture	Land Use Inventory
Michael Dykes	Contractor	Land Use Inventory

Background

The Agriculture Water Demand Model (AWDM) was developed in the Okanagan Watershed. It was developed in response to rapid population growth, drought conditions from climate change, and the overall increased demand for water. Many of the watersheds in British Columbia (BC) are fully allocated already or may be in the next 15 to 20 years. The AWDM helps to understand current agricultural water use and helps to fulfil the Province’s commitment under the “*Living Water Smart – BC Water Plan*” to reserve water for agricultural lands. The Model can be used to establish agricultural water reserves throughout the various watersheds in BC by providing current and future agricultural water use data.

Climate change scenarios developed by the University of British Columbia (UBC) and the Summerland Research and Development Centre predict an increase in agricultural water demand due to warmer and longer summers and lower precipitation during summer months in the future.

The Model was developed to provide current and future agricultural water demands. The Model calculates water use on a property-by-property basis, and sums each property to obtain a total water demand for the entire basin or each sub-basin. Crop, irrigation system type, soil texture and climate data are used to calculate the water demand. Climate data from 2003 was used to present information on one of the hottest and driest years on record, and 1997 data was used to represent a wet year. Lands within the Agriculture Land Reserve (ALR), depicted in green in Figure 1, were included in the project.

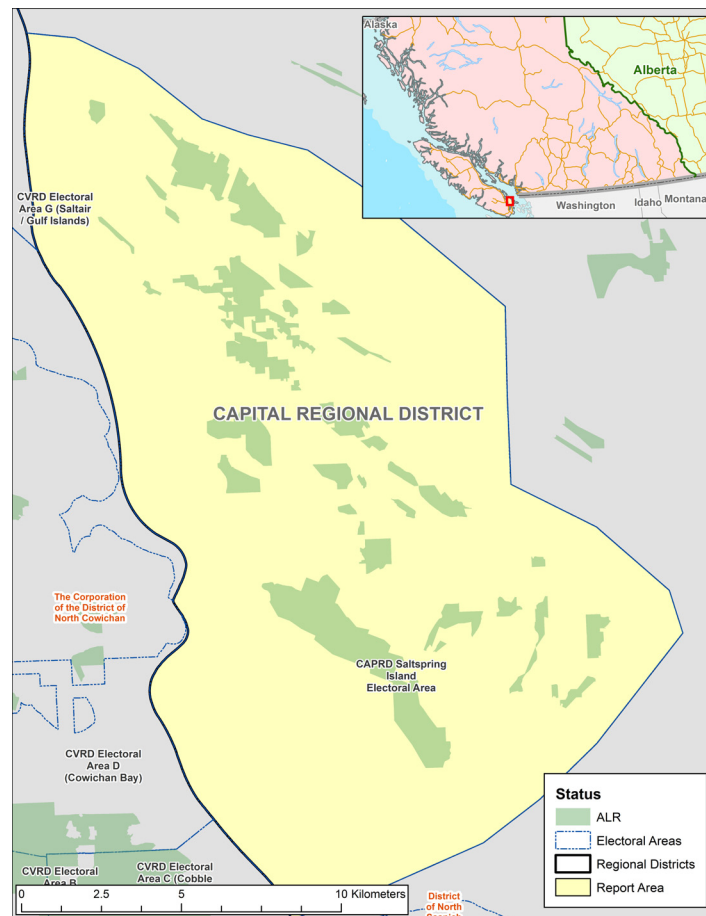


Figure 1 Map of Salt Spring Island (SSI)

Cadastre

Cadastre information was provided by the Integrated Cadastral Information Society (ICIS). A consultant was hired to unify all of the cadastral information into one seamless cover for the entire watershed. This process allows the Model to calculate water demand for each parcel and to report out on sub-basins, local governments, water purveyors or groundwater aquifers by summing the data for those areas. A GIS technician used aerial photographs to conduct an initial review of cropping information by cadastre, and divided the cadastre into polygons that separate farmstead and driveways from cropping areas. Different crops were also separated into different polygons if the difference could be identified on the aerial photographs. This data was entered into a database that was used by the field teams to conduct and complete the land use survey.

Land Use Survey

The survey maps and database were created by AGRI for the survey crew to enter data about each property. Surveys were done through the summer of 2017. The survey crew drove by each property where the team checked the database for accuracy using visual observation and the aerial photographs on the survey maps. A Professional Agrologist verified what was on the site, and a GIS technician altered the codes in the database as necessary (Figure 3). Corrections were handwritten on the maps during survey. The maps were then brought back to the office to have the hand-drawn lines digitized into the GIS system and have the additional polygons entered into the database.

Once acquired through the survey, the land use data was brought into the GIS to facilitate analysis and produce maps. Digital data, in the form of a database and GIS shape files (for maps), is available upon request through a data sharing agreement with the Ministry of Agriculture.

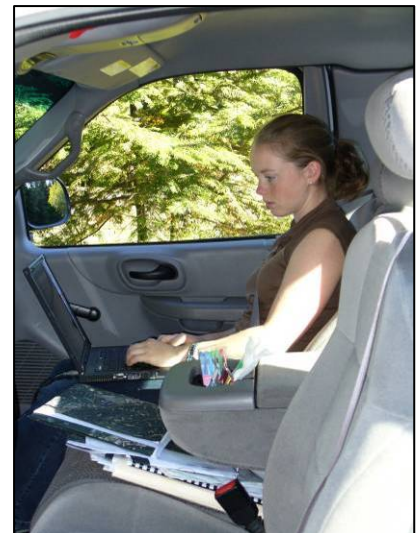


Figure 3 Land Use Survey

Figure 4 provides an example of a map sheet. The project area was divided into 65 map sheets. Each map sheet also had a key map to indicate where it was located.

The smallest unit for which water use is calculated are the polygons within each cadastre. A polygon is determined by a change in land use or irrigation system within a cadastre. Polygons are designated as blue lines within each cadastre as shown in Figures 4 and 5. The project area encompasses 8,367 parcels that are in or partially in the ALR. There are a total of 4,239 polygons (land covers) generated for the project area. Figure 5 provides an enhanced view of a cadastre containing three polygons. Each cadastre has a unique identifier as does each polygon. The polygon identifier is acknowledged by PolygonID. This allows the survey team to call up the cadastre in the database, review the number of polygons within the cadastre and ensure the land use is coded accurately for each polygon.

Soil Information

Soil information was obtained digitally from the Ministry of Environment’s Terrain and Soils Information System. The Computer Assisted Planning and Map Production application (CAPAMP) provided detailed (1:20,000 scale) soil surveys that were conducted in the Lower Mainland, on Southeast Vancouver Island, and in the Okanagan-Similkameen areas during the early 1980s. Products developed include soil survey reports, maps, agriculture capability and other related themes. Soil information required for this project was the soil texture (loam, etc.), the available water storage capacity and the peak infiltration rate for each texture type.

The intersection of soil boundaries with the cadastre and land use polygons creates additional polygons that the Model uses to calculate water demand. Figure 6 shows how the land use information is divided into additional polygons using the soil boundaries. The Model calculates water demand using every different combination of crop, soil and irrigation system as identified by each polygon.

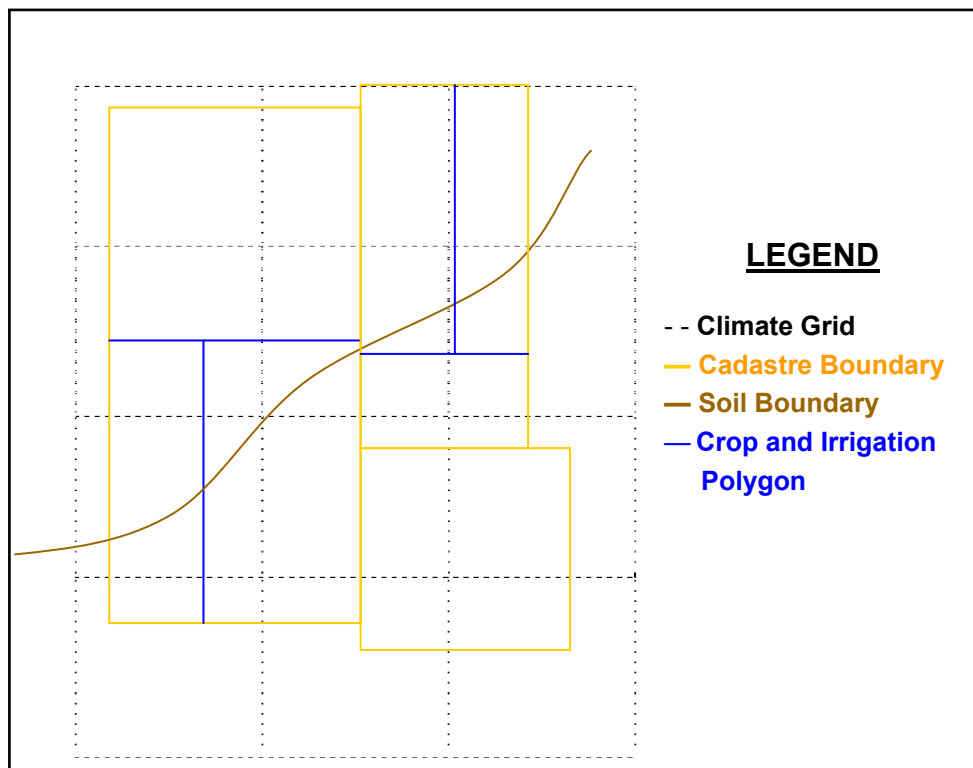


Figure 6 GIS Model Graphics

Climate Information

The agricultural water demand is calculated using climate, crop, irrigation system and soil information data. The climate in the interior region is quite diverse. The climate generally gets cooler and wetter from south to north and as elevation increases. To incorporate the climatic diversity, climate layers were developed for the entire region on a 500 m x 500 m grid. Each grid cell contains daily climate data, minimum and maximum temperature (T_{min} and T_{max}), and precipitation which allows the Model to calculate a daily reference evapotranspiration rate (ET_o) value. A range of agro-climatic indices such as growing degree days (GDD), corn heat units (CHU), frost free days and temperature sum (Tsum) can also be calculated for each grid cell based on temperature data. These values are used to determine seeding dates and the length of the growing season in the Model.

The climate dataset has been developed by using existing data from climate stations in and around the project area from 1961 to 2010. This climate dataset was then interpolated to provide a climate data layer for the entire watershed on the 500 m x 500 m grid. A detailed description of the Model can be obtained by contacting the authors. The climate grid cell that is prominent for a cadastre boundary is assigned to that cadastre. Additional polygons are not generated with the climate grid.

Some of the existing climate stations that were used to determine the climate coverage are shown in Figure 7. The attributes attached to each climate grid cell include:

- Latitude
- Longitude
- Elevation
- Aspect
- Slope
- Daily Precipitation
- Daily T_{min} and T_{max}

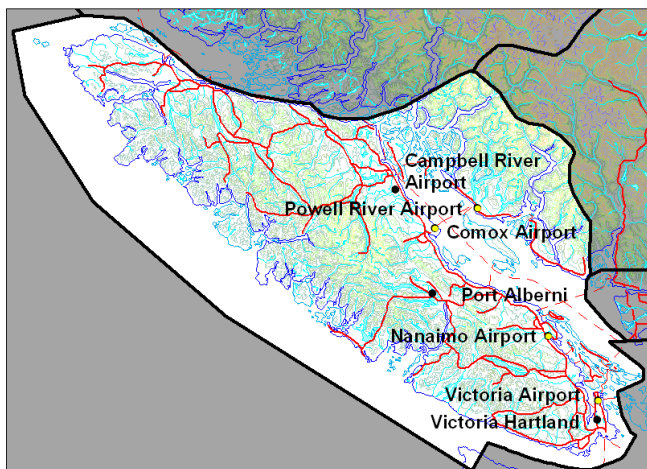


Figure 7 Climate Stations in the Project Area

A climate database contains T_{min} , T_{max} , T_{mean} and Precipitation for each day of the year from 1961 until 2006. The parameters that need to be selected, calculated and stored within the Model are evapotranspiration (ET_o), Tsum of 600 (for Kamloops), effective precipitation (EP), frost free days, GDD with base temperatures of 5 °C and 10 °C, CHU, and first frost date. These climate and crop parameters are used to determine the growing season length as well as the beginning and end of the growing season in Julian day.

Model Calculations

The model calculates the water demand for each polygon by using crop, irrigation, soil and climate parameters as explained below. Each polygon has been assigned an ID number as mentioned previously.

Crop

The CropID is an attribute of the PolygonID as each polygon will contain a single crop. The crop information (observed during the land use survey) has been collected and stored with PolygonID as part of the land use survey. CropID will provide cropping attributes to the Model for calculating water use for each polygon. CropID along with the climate data will also be used to calculate the growing season length and the beginning and end of the growing season. The attributes for CropID include rooting depth, availability coefficient, crop coefficient and a drip factor.

Rooting depth is the rooting depth for a mature crop in a deep soil.

An availability coefficient is assigned to each crop. The availability coefficient is used with the IrrigID to determine the soil moisture available to the crop for each PolygonID.

The crop coefficient adjusts the calculated ET_o for the stages of crop growth during the growing season. Crop coefficient curves have been developed for every crop. The crop coefficient curve allows the Model to calculate water demand with an adjusted daily ET_o value throughout the growing season.

The drip factor is used in the water use calculation for polygons where drip irrigation systems are used. Since the Model calculates water use by area, the drip factor adjusts the percentage of area irrigated by the drip system for that crop.

Irrigation

The IrrigID is an attribute of the PolygonID as each polygon will have a single irrigation system type operating. The irrigation information has been collected and stored (as observed during the land use survey) with the land use data. The land use survey determined if a polygon had an irrigation system operating, what the system type was, and if the system was being used. The IrrigID has an irrigation efficiency listed as an attribute.

Two of the IrrigID, Overtreedrip and Overtreemicro are polygons that have two systems in place. Two irrigation ID's occur when an overhead irrigation system has been retained to provide crop cooling or frost protection. In this case, the efficiencies used in the Model are the drip and microsprinkler efficiencies.

Soil

The soil layer came from CAPAMP at the Ministry of Environment. In addition, soil data provided by Agriculture and Agri-Food Canada (AAFC) was also used to generate multiple soil layers within each polygon. Each parcel was assigned the most predominant soil polygon, and then for each crop field

within that soil polygon, the most predominant texture within the crop's rooting depth was determined and assigned to the crop field.

Note that textures could repeat at different depths – the combined total of the thicknesses determined the most predominant texture. For example, a layer of 20 cm sand, followed by 40 cm clay and then 30 cm of sand would have sand be designated as the predominant soil texture.

The attributes attached to the SoilID is the Available Water Storage Capacity (AWSC) which is calculated using the soil texture and crop rooting depth.

The Maximum Soil Water Deficit (MSWD) is calculated to decide the parameters for the algorithm that is used to determine the Irrigation Requirement (IR). The Soil Moisture Deficit at the beginning of the season is calculated using the same terms as the MSWD.

Climate

The climate data in the Model is used to calculate a daily reference evapotranspiration rate (ET_o) for each climate grid cell. The data that is required to calculate this value are:

- Elevation, metres (m)
- Latitude, degrees ($^{\circ}$)
- Minimum Temperature, degree Celsius ($^{\circ}C$)
- Maximum Temperature, degree Celsius ($^{\circ}C$)
- Classification as Coastal or Interior
- Classification as Arid or Humid
- Julian Day

Data that is assumed or are constants in this calculation are:

- Wind speed 2 m/s
- Albedo or canopy reflection coefficient, 0.23
- Solar constant, G_{sc} 0.082 MJ^2min^{-1}
- Interior and Coastal coefficients, K_{Rs} 0.16 for interior locations
0.19 for coastal locations
- Humid and arid region coefficients, K_o 0 $^{\circ}C$ for humid/sub-humid climates
2 $^{\circ}C$ for arid/semi-arid climates

Agricultural Water Demand Equation

The Model calculates the Agriculture Water Demand (AWD) for each polygon, as a unique crop, irrigation system, soil and climate data is recorded on a polygon basis. The polygons are then summed to determine the AWD for each cadastre. The cadastre water demand values are then summed to determine AWD for the basin, sub-basin, water purveyor or local government. The following steps provide the process used by the Model to calculate Agricultural Water Demand. Detailed information is available on request.

1. *Pre-Season Soil Moisture Content*

Prior to the start of each crop's growing season, the soil's stored moisture content is modelled using the soil and crop evaporation and transpiration characteristics and the daily precipitation values. Precipitation increases the soil moisture content and evaporation (modelled using the

reference potential evapotranspiration) depletes it. In general, during the pre-season, the soil moisture depth cannot be reduced beyond the maximum evaporation depth; grass crops in wet climates, however, can also remove moisture through crop transpiration.

The process used to model the pre-season soil moisture content is:

1. Determine whether the modelling area is considered to be in a *wet* or *dry* climate (see *Wet/Dry Climate Assessment*), and retrieve the early season evaporation factor in the modelling area
2. For each crop type, determine the start of the growing season (see *Growing Season Boundaries*)
3. For each crop and soil combination, determine the *maximum soil water deficit* (MSWD) and *maximum evaporation factor* (maxEvaporation)
4. Start the initial storedMoisture depth on January 1 at the MSWD level
5. For each day between the beginning of the calendar year and the crop's growing season start, calculate a new storedMoisture from:
 - a. the potential evapotranspiration (ET_0)
 - b. the early season evaporation factor (earlyEvaporationFactor)
 - c. the effective precipitation (EP) = actual precipitation \times earlyEvaporationFactor
 - d. daily Climate Moisture Deficit (CMD) = $ET_0 - EP$
 - e. storedMoisture = previous day's storedMoisture – CMD

A negative daily CMD (precipitation in excess of the day's potential evapotranspiration) adds to the stored moisture level while a positive climate moisture deficit reduces the amount in the stored moisture reservoir. The stored moisture cannot exceed the maximum soil moisture deficit; any precipitation that would take the stored moisture level above the MSWD gets ignored.

For all crops and conditions except for grass in wet climates, the stored moisture content cannot drop below the maximum soil water deficit minus the maximum evaporation depth; without any crop transpiration in play, only a certain amount of water can be removed from the soil through evaporative processes alone. Grass in wet climates does grow and remove moisture from the soil prior to the start of the irrigation season however. In those cases, the stored moisture level can drop beyond the maximum evaporation depth, theoretically to 0.

Greenhouses and mushroom barns have no stored soil moisture content.

2. ***In-Season Precipitation***

During the growing season, the amount of precipitation considered effective (EP) depends on the overall wetness of the modelling area's climate (see *Wet/Dry Climate Assessment*). In dry climates, the first 5 mm of precipitation is ignored, and the EP is calculated as 75% of the remainder:

$$EP = (\text{Precip} - 5) \times 0.75$$

In wet climates, the first 5 mm is included in the EP. The EP is 75% of the actual precipitation:

$$EP = \text{Precip} \times 0.75$$

Greenhouses and mushroom barns automatically have an EP value of 0.

3. **Crop Cover Coefficient (K_c)**

As the crops grow, the amount of water they lose due to transpiration changes. Each crop has a pair of polynomial equations that provide the crop coefficient for any day during the crop's growing season. It was found that two curves, one for modelling time periods up to the present and one for extending the modelling into the future, provided a better sequence of crop coefficients than using a single curve for all years (currently 1961 to 2100). The application automatically selects the current or future curve as modelling moves across the *crop Curve Changeover Year*.

For alfalfa crops, there are different sets of equations corresponding to different cuttings throughout the growing season.

4. **Crop Evapotranspiration (ET_c)**

The evapotranspiration for each crop is calculated as the general ET_o multiplied by the crop coefficient (K_c):

$$ET_c = ET_o \times K_c$$

5. **Climate Moisture Deficit (CMD)**

During the growing season, the daily Climate Moisture Deficit (CMD) is calculated as the crop evapotranspiration (ET_c) less the Effective Precipitation (EP):

$$CMD = ET_c - EP$$

During each crop's growing season, a stored moisture reservoir methodology is used that is similar to the soil moisture content calculation in the pre-season. On a daily basis, the stored moisture level is used towards satisfying the climate moisture deficit to produce an *adjusted Climate Moisture Deficit* (CMD_a):

$$CMD_a = CMD - \text{storedMoisture}$$

If the storedMoisture level exceeds the day's CMD, then the CMD_a is 0 and the stored moisture level is reduced by the CMD amount. If the CMD is greater than the stored moisture, then all of the stored moisture is used (storedMoisture is set to 0) and the adjusted CMD creates an irrigation requirement.

The upper limit for the storedMoisture level during the growing season is the maximum soil water deficit (MSWD) setting.

6. **Crop Water Requirement (CWR)**

The Crop Water Requirement is calculated as the adjusted Climate Moisture Deficit (CMD_a) multiplied by the soil water factor (swFactor) and any stress factor (used primarily for grass crops):

$$CWR = CMD_a \times \text{swFactor} \times \text{stressFactor}$$

7. ***Irrigation Requirement (IR)***

The Irrigation Requirement is the Crop Water Requirement (CWR) after taking into account the irrigation efficiency (I_e) and, for drip systems, the drip factor (D_f):

$$IR = CWR \times \frac{D_f}{I_e}$$

For irrigation systems other than drip, the drip factor is 1.

8. ***The Irrigation Water Demand (IWD_{perc} and IWD)***

The portion of the Irrigation Water Demand lost to deep percolation is the Irrigation Requirement (IR) multiplied by the percolation factor (soilPercFactor):

$$IWD_{perc} = IR \times \text{soilPercFactor}$$

The final Irrigation Water Demand (IWD) is then the Irrigation Requirement (IR) plus the loss to percolation (IWD_{perc}):

$$IWD = IR + IWD_{perc}$$

9. ***Frost Protection***

For some crops (e.g. cranberries), an application of water is often used under certain climatic conditions to provide protection against frost damage. For cranberries, the rule is: when the temperature drops to 0 °C or below between March 16 and May 20 or between October 1 and November 15, a frost event will be calculated. The calculated value is an application of 2.5 mm per hour for 10 hours. In addition, 60% of the water is recirculated and reused, accounting for evaporation and seepage losses.

This amounts to a modelled water demand of 10 mm over the cranberry crop's area for each day that a frost event occurs between the specified dates.

10. ***Annual Soil Moisture Deficit***

Prior to each crop's growing season, the Model calculates the soil's moisture content by starting it at full (maximum soil water deficit level) on January 1, and adjusting it daily according to precipitation and evaporation. During the growing season, simple evaporation is replaced by the crop's evapotranspiration as it progresses through its growth stages. At the completion of each crop's growing season, an annual soil moisture deficit (SMD) is calculated as the difference between the soil moisture content at that point and the maximum soil water deficit (MSWD):

$$SMD = MSWD - \text{storedMoisture}$$

In dry/cold climates, this amount represents water that the farmer would add to the soil in order to prevent it from freezing. Wet climates are assumed to have sufficient precipitation and warm enough temperatures to avoid the risk of freezing without this extra application of water; the SMD demand is therefore recorded only for dry areas.

There is no fixed date associated with irrigation to compensate for the annual soil moisture deficit. The farmer may choose to do it any time after the end of the growing season and before the freeze up. In the Model's summary reports, the water demand associated with the annual soil moisture deficit shows as occurring at time 0 (week 0, month 0, etc.) simply to differentiate it from other demands that do have a date of occurrence during the crop's growing season.

Greenhouses and mushroom barns do not have an annual soil moisture deficit.

Livestock Water Use

The Model calculates an estimated livestock water demand using agricultural census data and an estimate of the water use per animal. Water use for each animal type is calculated a bit differently depending on requirements. For example, for a dairy milking cow, the water demand for each animal includes, drinking, preparation for milking, pen and barn cleaning, milking system washout, bulk tank washout and milking parlor washing. However, for a dry dairy cow, the demand only includes drinking and pen and barn cleaning.

The water use is estimated on a daily basis per animal even though the facility is not cleaned daily. For example, for a broiler operation, the water use for cleaning a barn is calculated as 4 hours of pressure washing per cycle at a 10 gpm flow rate, multiplied by 6 cycles per barn with each barn holding 50,000 birds. On a daily basis, this is quite small with a value of 0.01 litres per day per bird applied.

For all cases, the daily livestock demand is applied to the farm location. However, in the case of beef, the livestock spend quite a bit of the year on the range. Since the actual location of the animals cannot be ascertained, the water demand is applied to the home farm location, even though most of the demand will not be from this location. Therefore, the animal water demand on a watershed scale will work fine but not when the demand is segregated into sub-watersheds or groundwater areas.

The estimates used for each livestock are shown in Table 1.

Table 1 Livestock Water Demand (Litres/day)				
Animal Type	Drinking	Milking Preparation	Barn Component	Total
Milking Dairy Cow	65	5	15	85
Dry Cow	45		5	50
Swine	12		0.5	12.5
Poultry – Broiler	0.16		0.01	0.17
Poultry – Layer	0.08		0.01	0.09
Turkeys	0.35		0.01	0.36
Goats	8			8
Sheep	8			8
Beef – range, steer, bull, heifer	50			50
Horses	50			50

Definition and Calculation of Individual Terms Used in the Irrigation Water Demand Equation

Growing Season Boundaries

There are three sets of considerations used in calculating the start and end of the irrigation season for each crop:

- temperature-based growing season derivations, generally using Temperature Sum (Tsum) or Growing Degree Day (GDD) accumulations
- the growing season overrides table
- the irrigation season overrides table

These form an order of precedence with later considerations potentially overriding the dates established for the previous rules. For example, the temperature-based rules might yield a growing season start date of day 90 for a given crop in a mild year. To avoid unrealistic irrigation starts, the season overrides table might enforce a minimum start day of 100 for that crop; at that point, the season start would be set to day 100. At the same time, a Water Purveyor might not turn on the water supply until day 105; specifying that as the minimum start day in the irrigation season overrides table would prevent any irrigation water demands until day 105.

This section describes the rules used to establish growing season boundaries based on the internal calculations of the Model. The GDD and Tsum Day calculations are described in separate sections. The *standard end of season* specified for several crops is the earlier of the end date of Growing Degree Day with base temperature of 5 °C (GDD₅) or the first frost.

1. *Corn (silage corn)*

- uses the corn_start date for the season start
- season end: earlier of the killing frost or the day that the CHU2700 (2700 Corn Heat Units) threshold is reached

2. *Sweetcorn, Potato, Tomato, Pepper, Strawberry, Vegetable, Pea*

- corn_start date for the season start
- corn start plus 110 days for the season end

3. *Cereal*

- GDD₅ start for the season start
- GDD₅ start plus 130 days for the season end

4. *AppleHD, AppleMD, AppleLD, Asparagus, Berry, Blueberry, Ginseng, Nuts, Raspberry, Sourcherry, Treefruit, Vineberry*

- season start: $(0.8447 \times \text{tsum600_day}) + 18.877$
- standard end of season

5. *Pumpkin*

- corn_start date
- standard end of season

6. ***Apricot***
 - season start: $(0.9153 \times \text{tsum400_day}) + 5.5809$
 - standard end of season
7. ***CherryHD, CherryMD, CherryLD***
 - season start: $(0.7992 \times \text{tsum450_day}) + 24.878$
 - standard end of season
8. ***Grape, Kiwi***
 - season start: $(0.7992 \times \text{tsum450_day}) + 24.878$
 - standard end of season
9. ***Peach, Nectarine***
 - season start: $(0.8438 \times \text{tsum450_day}) + 19.68$
 - standard end of season
10. ***Plum***
 - season start: $(0.7982 \times \text{tsum500_day}) + 25.417$
 - standard end of season
11. ***Pear***
 - season start: $(0.8249 \times \text{tsum600_day}) + 17.14$
 - standard end of season
12. ***Golf, TurfFarm***
 - season start: later of the GDD₅ start and the tsum300_day
 - standard end of season
13. ***Domestic, Yard, TurfPark***
 - season start: later of the GDD₅ start and the tsum400_day
 - standard end of season
14. ***Greenhouse (interior greenhouses)***
 - fixed season of April 1 – October 30
15. ***GH Tomato, GH Pepper, GH Cucumber***
 - fixed season of January 15 – November 30
16. ***GH Flower***
 - fixed season of March 1 – October 30
17. ***GH Nursery***
 - fixed season of April 1 – October 30
18. ***Mushroom***
 - all year: January 1 – December 31

19. Shrubs/Trees, Fstock, NurseryPOT

- season start: tsum500_day
- end: Julian day 275

20. Floriculture

- season start: tsum500_day
- end: Julian day 225

21. Cranberry

- season start: tsum500_day
- end: Julian day 275

22. Grass, Forage, Alfalfa, Pasture

- season start: later of the GDD₅ and the tsum600_day
- standard end of season

23. Nursery

- season start: tsum400_day
- standard end of season

Evapotranspiration (ET_o)

The ET_o calculation follows the FAO Penman-Montieth equation. Two modifications were made to the equation:

- Step 6 – Inverse Relative Distance Earth-Sun (d_r)
Instead of a fixed 365 days as a divisor, the actual number of days for each year (365 or 366) was used.
- Step 19 – Evapotranspiration (ET_o)
For consistency, a temperature conversion factor of 273.16 was used instead of the rounded 273 listed.

Availability Coefficient (AC)

The availability coefficient is a factor representing the percentage of the soil's total water storage that the crop can readily extract. The factor is taken directly from the crop factors table (crop_factors) based on the cropId value.

Rooting Depth (RD)

The rooting depth represents the crop's maximum rooting depth and thus the depth of soil over which the plant interacts with the soil in terms of moisture extraction. The value is read directly from the crop factors table.

Stress Factor (stressFactor)

Some crops, such as *grasses*, are often irrigated to a less degree than their full theoretical requirement for optimal growth. The *stress factor (crop_groups_and_factors)* reduces the calculated demand for these crops.

Available Water Storage Capacity (AWSC)

The available water storage capacity is a factor representing the amount of water that a particular soil texture can hold without the water dropping through and being lost to deep percolation. The factor is taken directly from the soil factors table (*soil_factors*).

Maximum Soil Water Deficit (MSWD)

The maximum soil water deficit is the product of the crop's availability coefficient, rooting depth, and the available water storage capacity of the soil:

$$MSWD = RD \times AWSC \times AC$$

Deep Percolation Factor (Soilpercfactor)

The soil percolation factor is used to calculate the amount of water lost to deep percolation under different management practices.

For greenhouse crops, the *greenhouse leaching factor* is used as the basic soil percolation factor. This is then multiplied by a greenhouse recirculation factor, if present, to reflect the percentage of water re-captured and re-used in greenhouse operations.

$$soilPercFactor = soilPercFactor \times (1 - recirculationFactor)$$

For Nursery Pot (Nursery POT) and Forestry Stock (Fstock) crops, the soil percolation factor is fixed at 35%. For other crops, the factor depends on the soil texture, the MSWD, the irrigation system, and the Irrigation Management Practices code. The percolation factors table (*soil_percolation_factors*) is read to find the first row with the correct management practices, soil texture and irrigation system, and a MSWD value that matches or exceeds the value calculated for the current land use polygon.

If the calculated MSWD value is greater than the index value for all rows in the percolation factors table, then the highest MSWD factor is used. If there is no match based on the passed parameters, then a default value of 0.25 is applied.

For example, a calculated MSWD value of 82.5 mm, a soil texture of sandy loam (SL) and an irrigation system of solid set overtree (Ssovertime) would retrieve the percolation factor associated with the MSWD index value of 75 mm in the current table (presently, there are rows for MSWD 50 mm and 75 mm for SL and Ssovertime).

Maximum Evaporation Factor (maxEvaporation)

Just as different soil textures can hold different amounts of water, they also have different depths that can be affected by evaporation. The factor is taken directly from the soil factors table.

Irrigation Efficiency (I_e)

Each irrigation system type has an associated efficiency factor (inefficient systems require the application of more water in order to satisfy the same crop water demand). The factor is read directly from the irrigation factors table (*irrigation_factors*).

Soil Water Factor (swFactor)

For the greenhouse “crop”, the soil water factor is set to 1. For other crops, it is interpolated from a table (*soil_water_factors*) based on the MSWD. For Nurseries, the highest soil water factor (lowest MSWD index) in the table is used; otherwise, the two rows whose MSWD values bound the calculated MSWD are located and a soil water factor interpolated according to where the passed MSDW value lies between those bounds.

For example, using the current table with rows giving soil water factors of 0.95 and 0.9 for MSWD index values of 75 mm and 100 mm respectively, a calculated MSWD value of 82.5 mm would return a soil water factor of:

$$0.95 + \left[\frac{82.5 - 75}{100 - 75} \times (0.9 - 0.95) \right]$$
$$= 0.935$$

If the calculated MSWD value is higher or lower than the index values for all of the rows in the table, then the factor associated with the highest or lowest MSWD index is used.

Early Season Evaporation Factor (earlyEvaporationFactor)

The effective precipitation (precipitation that adds to the stored soil moisture content) can be different in the cooler pre-season than in the growing season. The early season evaporation factor is used to determine what percentage of the precipitation is considered effective prior to the growing season.

Crop Coefficient (K_c)

The crop coefficient is calculated from a set of fourth degree polynomial equations representing the crop’s ground coverage throughout its growing season. The coefficients for each term are read from the crop factors table based on the crop type, with the variable equalling the number of days since the start of the crop’s growing season. For example, the crop coefficient for Grape on day 35 of the growing season would be calculated as:

$$K_c = [0.0000000031 \times (35)^4] + [-0.0000013775 \times (35)^3] + (0.0001634536 \times (35)^2) + (-0.0011179845 \times 35) + 0.2399004137$$
$$= 0.346593241$$

Alfalfa crops have an additional consideration. More than one cutting of alfalfa can be harvested over the course of the growing season, and the terms used for the crop coefficient equation changes for the different cuttings. For alfalfa, the alfalfa cuttings table is first used to determine which cutting period the day belongs to (first, intermediate or last), and after that the associated record in the crop factors table is accessed to determine the terms.

There are two sets of polynomial coefficients used to calculate the crop coefficient; the first set is used for modelling time periods up to the year specified as the *crop curve changeover year*; and the second for modelling into the future. The changeover year will be modified as time goes on and new historical climate observations become available.

Growing Degree Days (GDD)

The Growing Degree Day calculations generate the start and end of GDD accumulation.

1. *Start of GDD Accumulation*

For each base temperature (bases 5 and 10 are always calculated, other base temperature can be derived), the start of the accumulation is defined as occurring after 5 consecutive days of T_{mean} matching or exceeding the base temperature (BaseT). The search for the start day gets reset if a killing frost (< -2 °C) occurs, even after the accumulation has started. The search also restarts if there are 2 or more consecutive days of $T_{\text{min}} \leq 0$ °C. The GDD start is limited to Julian days 1 to 210; if the accumulation has not started by that point, then it is unlikely to produce a reasonable starting point for any crop.

2. *End of GDD accumulation*

The search for the end of the GDD accumulation begins 50 days after its start. The accumulation ends on the earlier of 5 consecutive days where T_{mean} fails to reach BaseT (strictly *less than*) or the first killing frost (-2 °C).

During the GDD accumulation period, the daily contribution is the difference between T_{mean} and BaseT, as long as T_{mean} is not less than BaseT:

$$\text{GDD} = T_{\text{mean}} - \text{BaseT}; 0 \text{ if negative}$$

Frost Indices

Three frost indices are tracked for each year:

- the last spring frost is the latest day in the first 180 days of the year with a $T_{\text{min}} \leq 0$ °C
- the first fall frost is the first day between days 240 and the end of the year where $T_{\text{min}} \leq 0$ °C
- the killing frost is the first day on or after the first fall frost where $T_{\text{min}} \leq -2$ °C

Corn Heat Units (CHU)

The Corn Heat Unit is the average of two terms using T_{min} and T_{max} . Prior to averaging, each term is set to 0 individually if it is negative.

$$\begin{aligned} \text{term1} &= [3.33 \times (T_{\max} - 10)] - [0.084 \times (T_{\max} - 10) \times (T_{\max} - 10)]; 0 \text{ if negative} \\ \text{term2} &= 1.8 \times (T_{\min} - 4.44); 0 \text{ if negative} \\ \text{CHU} &= \frac{(\text{term1} + \text{term2})}{2} \end{aligned}$$

Corn Season Start and End

The corn season boundary derivations are similar to the GDD determinations. The start day is established by 3 consecutive days where $T_{\text{mean}} \geq 11.2$ °C. As in the case of the GDD calculations, the search for the corn season start day gets reset if $T_{\min} \leq -2$ °C, or if there are 2 or more consecutive days of -2 °C $\leq T_{\min} \leq 0$ °C.

The search for the silage corn season end begins 50 days after the start. The season ends on the earlier of a mean temperature dropping below 10.1 or a killing frost.

The end of the sweet corn season is defined as 110 days after the season start.

Tsum Indices

The Tsum day for a given number is defined as the day that the sum of the positive daily T_{mean} reaches that number. For example, the Tsum400 day is the day where the sum of the positive T_{mean} starting on January 1 sum to 400 units or greater.

Days where T_{mean} falls below 0 °C are simply not counted; therefore, the Model does not restart the accumulation sequence.

Wet/Dry Climate Assessment

Starting with the Lower Mainland, some of the modelling calculations depend on an assessment of the general climatic environment as *wet* or *dry*. For example, when modelling the soil moisture content prior to the start of the crop's growing season, the reservoir can only be drawn down by evaporation except for *grass* crops in *wet* climates which can pull additional moisture out of the soil.

The assessment of wet or dry uses the total precipitation between May 1 and September 30. If the total is more than 125 mm during that period, the climate is considered to be *wet* and otherwise *dry*.

Groundwater Use

The Model generates water sources for irrigation systems. This is done by first determining which farms are supplied by a water purveyor, and then coding those farms as such. Most water purveyors use surface water but where groundwater is used, the farms are coded as groundwater use. The second step is to check all water licences and assign the water licences to properties in the database. The remaining farms that are irrigating will therefore not have a water licence or be supplied by a water purveyor. The assumption is made that these farms are irrigated by groundwater sources.

Land Use Results

A summary of the land area and the inventoried project area are shown in Table 2. The inventoried area includes parcels that are in and partially in the Agricultural Land Reserve (ALR).

Table 2 Overview of the Land and Inventoried Area	
Area Type	Area (ha)
Salt Spring Island (SSI)	
Total Area	486,743
Area of Water Feature	12,153
Area of Land (excluding water features)	18,272
ALR Area	14,074
Inventoried Area	
Total Inventoried Area	6,213

Out of the total inventoried area, there are:

- 1,078 ha of cultivated crops within which only 99 ha are currently being irrigated and 135 are inactively farmed.
- over 4,000 ha of land that are natural and semi-natural areas (not being farmed)
- Over 400 ha that are anthropogenically modified in buildings, roads and landscaped (not being farmed)

The primary agricultural use of the ARL area is shown in Table 3. Refer to the Agricultural Land Use Inventory (ALUI) report for details.

Table 3 Summary of Primary Agricultural Activities within the ALR where Primary Land Use is agriculture in the Project Area	
Primary Agriculture Activity	Total Land Cover (ha)
Vegetables	34
Forage	29
Grape	13
Tree Fruits	8
Nursery and Tree Plantations	7
Berries	3
Others	5
Total	99

Figures 8 and 9 show the areas of water and land parcels in the basin graphically.

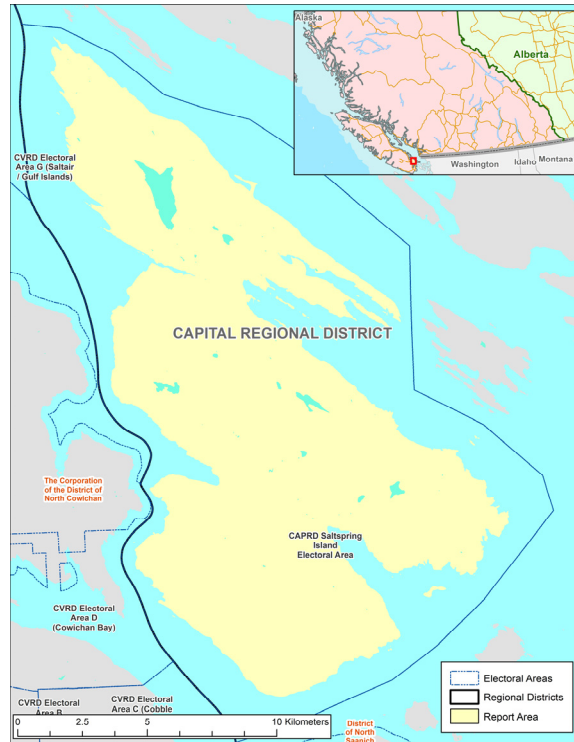


Figure 8 Water Areas in the Project Area

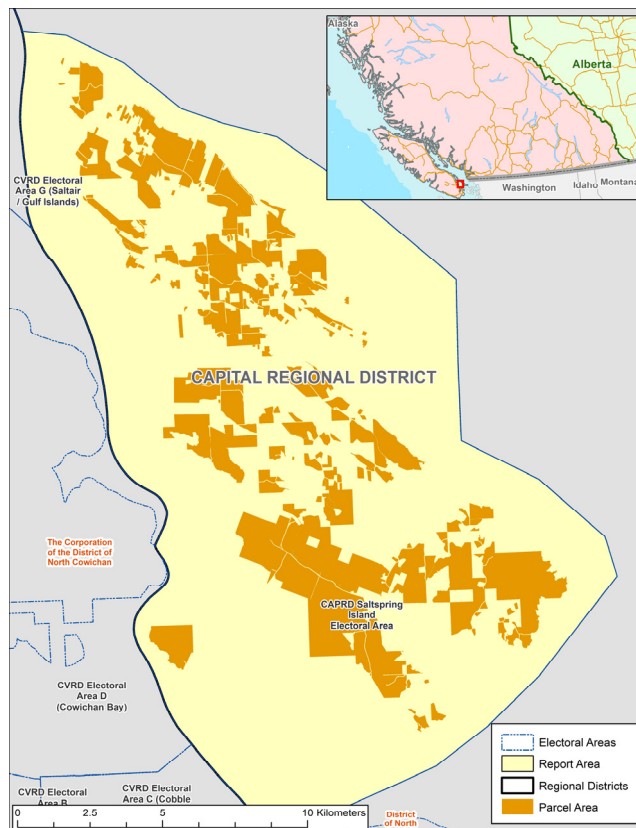


Figure 9 Land Parcels in the Project Area

Agricultural Water Demand Results

The Model has a reporting feature that can save and generate reports for many different scenarios that have been pre-developed. This report will provide a summary of the reported data in the Appendices. Climate data from 1997 and 2003 were chosen as they represent a relatively wet year and dry year respectively. Most reports are based on the 2003 data since the maximum current demand can then be presented. Scenarios using climate change information in the 2050's is also presented.

Annual Crop Water Demand – Tables A and B

The Model can use three different irrigation management factors, good, average and poor. Unless otherwise noted, average management were used in the tables. Appendix Table A provides the annual irrigation water demand for current crop and irrigation systems used for the year 2003 using average irrigation management, and Table B provides the same data for 1997.

Where a crop was not established, the acreage was assigned a forage crop so that the Model could determine a water demand. The total irrigated acreage in SSI is 99 hectares (ha), including 34 ha of vegetables and 29 ha of forage crops (alfalfa, forage corn, grass, legume and pasture). In SSI, 32 ha is supplied by licensed surface water sources, and 67 ha is irrigated with groundwater.

The total annual irrigation demand was 655,612 m³ in 2003, and dropped to 284,665 m³ in 1997. During a wet year like 1997, the demand was only 43% of a hot dry year like 2003.

In addition, the Model also calculates demand based on relatively good practices. As such, actual use may actually be higher or lower than what is calculated by the Model.

Annual Water Demand by Irrigation System – Table C

The crop irrigation demand can also be reported by irrigation system type as shown in Table C. The more efficient irrigation system for vegetable is drip (including overtreedrip) which irrigates 24 ha in the project area, and for forage is low-pressure pivots which are not being used in this area. There is also a large portion of the vegetables irrigated by sprinkler systems (including travelling guns and solid set guns). Sprinkler, solid set guns, and travelling guns irrigate 70 ha of the agricultural crops.

Annual Water Demand by Soil Texture – Table D

Table D provides annual water demand by soil texture. Where soil texture data is missing, the soil texture has been defaulted to sandy loam. The defaults are shown in Table D.

Annual Water Demand by Aquifer – Table E

The model calculates water demand on a property by property basis and can summarize the data for each aquifer in the project area. Table E provides an estimated water demand for each aquifer.

Irrigation Management Factors – Table F

The Model can estimate water demand based on poor, average and good irrigation management factors. This is accomplished by developing an irrigation management factor for each crop, soil and irrigation

system combination based on subjective decision and percolation rates. The Maximum Soil Water Deficit (MSWD) is the maximum amount of water that can be stored in the soil within the crop rooting zone. An irrigation system applying more water than what can be stored will result in percolation beyond the crop's rooting depth. Irrigation systems with high application rates will have a probability of higher percolation rates, a stationary gun for instance.

For each soil class, a range of four MSWD are provided, which reflect a range of crop rooting depths. An irrigation management factor, which determines the amount of leaching, is established for each of the MSWD values for the soil types (Table 4). The management factor is based on irrigation expertise as to how the various irrigation systems are able to operate. For example, Table 5 indicates that for a loam soil and a MSWD of 38 mm, a solid set overtree system has a management factor of 0.10 for good management while the drip system has a management factor of 0.05. This indicates that it is easier to prevent percolation with a drip system than it is with a solid set sprinkler system. For poor management, the factors are higher.

There are a total of 1,344 irrigation management factors established for the 16 different soil textures, MSWD and 21 different irrigation system combinations used in the Model.

Table 4 Irrigation Management Factors							
Soil Texture	MSWD	Solid Set Overtree			Drip		
		Good	Average	Poor	Good	Average	Poor
Loam	38	0.10	0.15	0.20	0.05	0.10	0.15
	50	0.05	0.10	0.15	0.05	0.075	0.10
	75	0.05	0.10	0.15	0.05	0.075	0.10
	100	0.05	0.075	0.10	0.05	0.075	0.10
Sandy loam	25	0.20	0.225	0.25	0.10	0.15	0.20
	38	0.10	0.15	0.20	0.10	0.125	0.15
	50	0.05	0.10	0.15	0.05	0.10	0.10
	75	0.05	0.10	0.15	0.05	0.075	0.10

The management factors increase as the MSWD decreases because there is less soil storage potential in the crop rooting depth. For irrigation systems such as guns, operating on a pasture which has a shallow rooting depth, on a sandy soil which cannot store much water, the poor irrigation management factor may be as high as 0.50.

The management factor used in the Model assumes all losses are deep percolation while it is likely that some losses will occur as runoff as well.

Table F provides an overview of the impacts on the management factors and irrigation systems used. Since a large portion of the crops in the region are vegetable and forage crops most of which are currently irrigated with sprinkler system which need to be run almost non-stop especially in peak season, the impacts of improved management are not significant (2% in total water use reduction). A further reduction could be achieved by improving irrigation efficiencies as shown in Table H.

This table also provides percolation rates based on good, average and poor management using 2003 climate data. In summary, good management is 64,300 m³, average is 80,481 m³ and poor management is 96,663 m³. Percolation rates for poor management are 33% higher than for good management.

Deep Percolation – Table G

The percolation rates vary by crop, irrigation system type, soil and the management factor used. Table G shows the deep percolation amounts by irrigation system type for average management. The last column provides a good indication of the average percolation per hectare for the various irrigation system types. For example, drip irrigation systems have only about 60% of the percolation rates of gun systems.

Improved Irrigation Efficiency and Good Management – Table H

There is an opportunity to reduce water use by converting irrigation systems to a higher efficiency for some crops. For example, drip systems could be used for all fruit crops, vegetable crops and some of the other horticultural crops, but not forage crops. In addition, using better management such as irrigation scheduling techniques will also reduce water use, especially for forage where drip conversion is not possible. Table H provides a scenario of water demand if all sprinkler systems are converted to drip systems for horticultural crops in the project area, as well as converting irrigation systems to low-pressure pivot systems for forage fields over 10 ha, using good irrigation management. In this case, the water demand for 2003 would reduce from 655,612 m³ to 516,257 m³ (27% reduction).

Livestock Water Use – Table I

The Model provides an estimate of water use for livestock. The estimate is based on the number of animals in the project area as determined by the latest census, the drinking water required for each animal per day and the barn or milking parlour wash water. Values used are shown in Table 1. For the project area, the amount of livestock water is estimated at 48,781 m³.

Climate Change Water Demand for 2050 – Table J

The Model also has access to climate change information until the year 2100. While data can be run for each year, three driest years in the 2050's were selected to give a representation of climate change. Figure 10 shows the climate data results which indicate that 2053, 2056, and 2059 generate the highest annual ET_o and lowest annual precipitation. These three years were used in this report.

Table J provides the results of climate change on irrigation demand for the three years selected using current crops and irrigation systems. Current crops and irrigation systems are used to show the increase due to climate change only, with no other changes taking place.

Figure 11 shows all of the climate change scenario runs for the Okanagan using 12 climate models from 1960 to 2100. This work was compiled by Denise Neilsen at the Agriculture and Agri-Food Canada – Summerland Research and Development Centre. There is a lot of scatter in this figure, but it is obvious that there is a trend of increasing water demand.

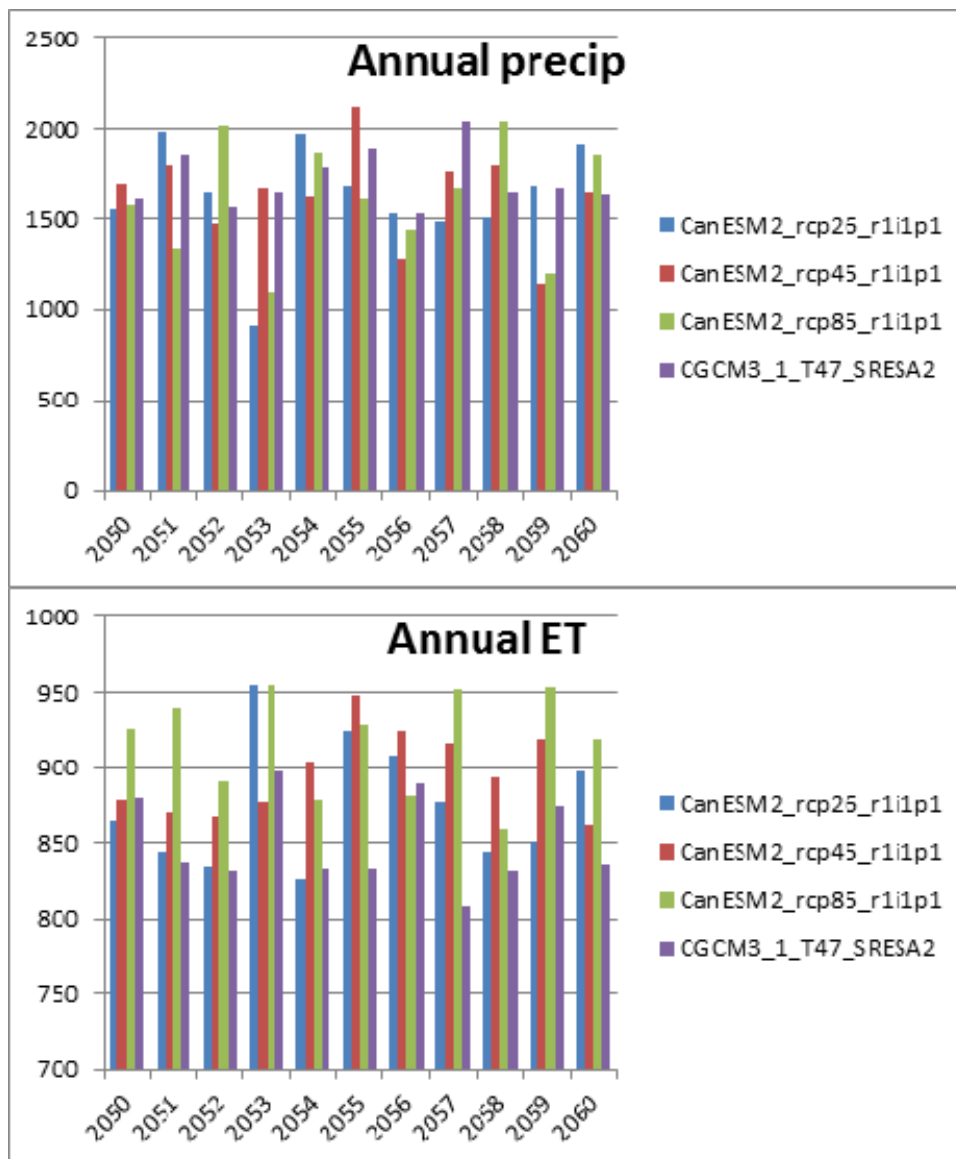


Figure 10 Annual ET and Effective Precipitation in 2050's

The three climate change models used in this report are access1 rcp85, canESM2 rcp85 and cnrm-cm5 rcp85. Running only three climate change models on three selected future years in the project area is not sufficient to provide a trend like in Figure 11. What the results do show is that in an extreme climate scenario, it is possible to have an annual water demand that is 20% higher than what was experienced in 2003 based on canESM2 rcp85 climate model in 2053. More runs of the climate change models will be required to better estimate a climate change trend for the region.

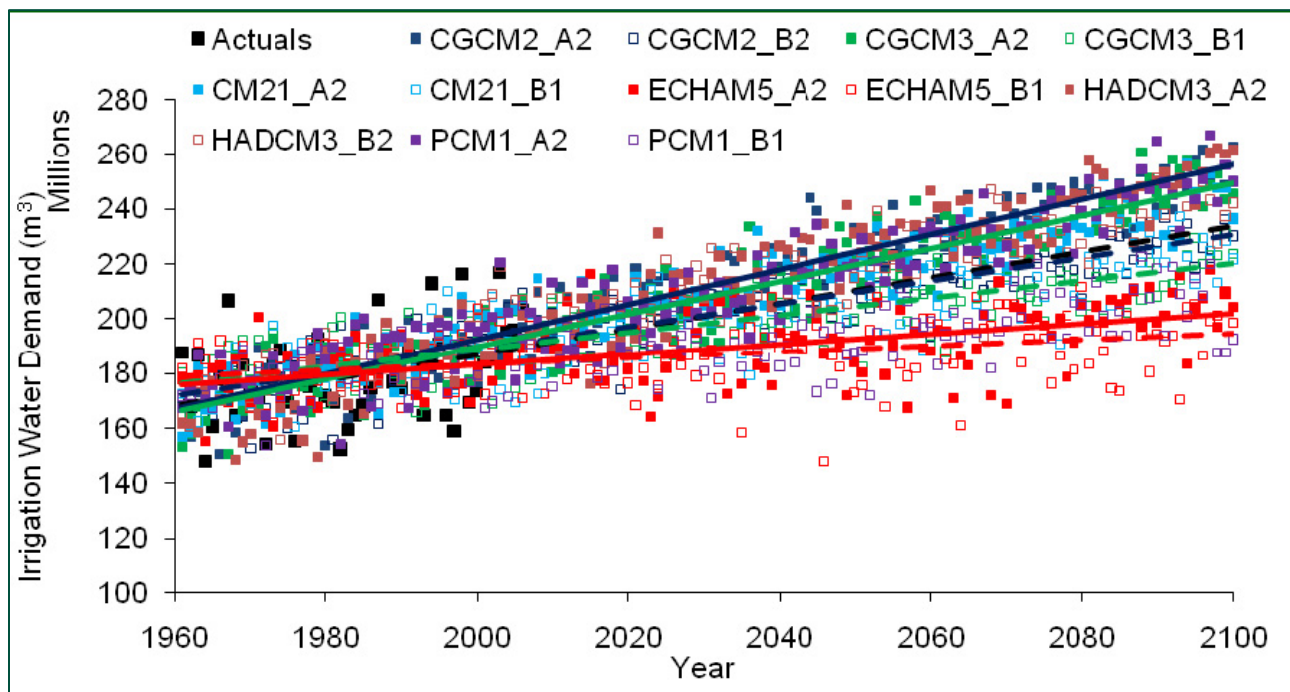


Figure 11 Future Irrigation Demand for All Outdoor Uses in the Okanagan in Response to Observed Climate Data (Actuals) and Future Climate Data Projected from a Range of Global Climate Models

Agricultural Buildout Crop Water Demand Using 2003 Climate Data – Table K

An agricultural irrigated buildout scenario was developed that looked at potential agricultural lands that could be irrigated in the future. The rules used to establish where potential additional agricultural lands were located are as follows:

- within 1,000 m of water supply (lake)
- within 1,000 m of water supply (water course)
- within 1,000 m of water supply (wetland)
- within 1,000 m of high productivity aquifer
- within 1,000 m of water purveyor
- with Ag Capability class 1-4 only where available
- must be within the ALR
- below 750 m average elevation
- must be private ownership

Physical structure (e.g., farmstead, houses) are not considered to be available for the buildout scenario. For the areas that are determined to be eligible for future buildout, a crop and irrigation system need to be applied. Where a crop already existed in the land use inventory, that crop would remain and an irrigation system assigned. If no crop existed, then a crop and an irrigation system are assigned as per the criteria below:

- 70% Vegetable – 70% drip, 30% sprinkler
- 30% Forage – 50% pivot, 30% sprinkler, 20% travelling gun

Figure 12 indicates the location of agricultural land that is currently irrigated (red) and the land that can be potentially irrigated (blue). Based on the scenario provided for the project area, the additional agricultural land that could be irrigated is 513 ha, which is an increase in irrigated acreage of 518%. The water demand for a year like 2003 would then be about 3.2 million m³ assuming efficient irrigation systems and good management. Figure 12 can be provided in a larger scale by contacting the Ministry of Agriculture.

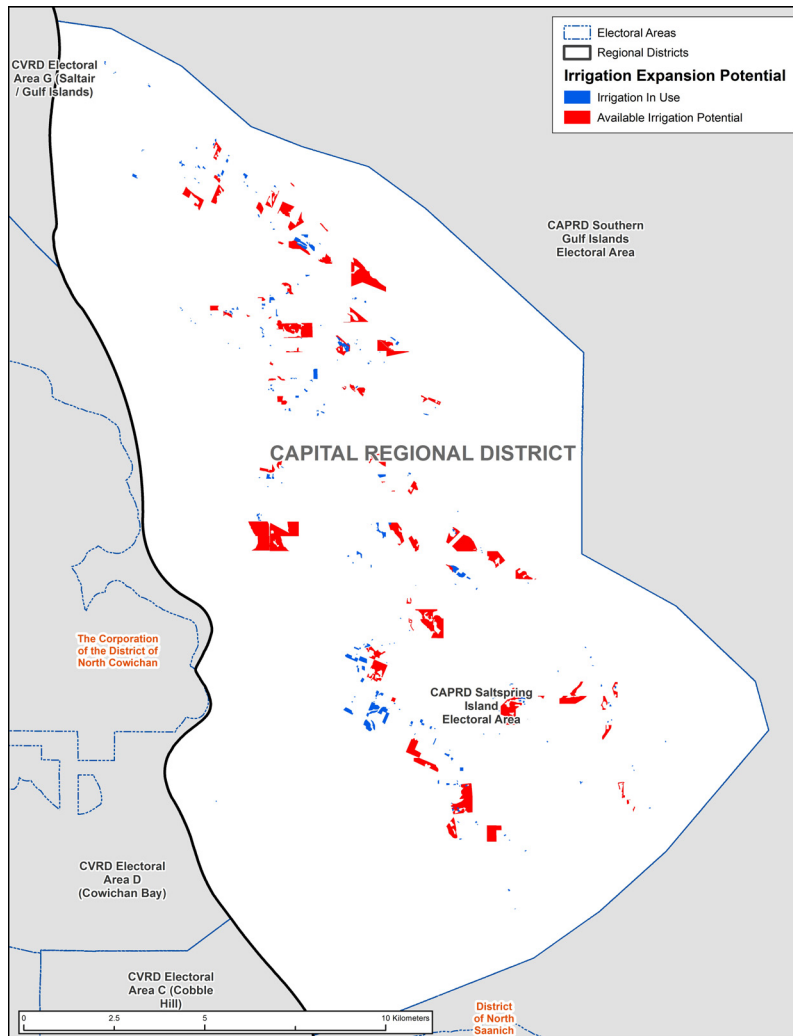


Figure 12 Irrigation Expansion Potential for the Project Area

Agricultural Buildout Crop Water Demand for 2050 – Table L

The same irrigation expansion and cropping scenario used to generate the values in Table K were used to generate the climate change water demand shown in Table L. See discussion under Table J section. When climate change is added to the buildout scenario, the water demand increases from 3.2 million m³ to 3.8 million m³ (a further 18% increase) based on climate change model canESM2 rcp85 in 2053 using the highest potential scenario.

Irrigation Systems Used for the Buildout Scenario for 2003 – Table M

Table M provides an account of the irrigation systems used by area for the buildout scenario in the previous two examples. Note that pivot irrigation (especially low-pressure type) is expected to be used for forage field over 10 ha in size to be economically feasible.

Water Demand for the Buildout Area by Aquifer 2003 Climate Data – Table N

Table N provides the water demand by water purveyors for the buildout scenario used in this report. Comparing these values with the result in Table E will provide information on the possible increased water demand from groundwater source for the projected irrigated areas. The Model does not determine that there is sufficient groundwater available, only that this would be the potential demand. Note that all the aquifers in this project area have low productivity of groundwater based on the information from BC Ministry of Environment.

Literature

Cannon, A.J., and Whitfield, P.H. (2002), Synoptic map classification using recursive partitioning and principle component analysis. *Monthly Weather Rev.* 130:1187-1206.

Cannon, A.J. (2008), Probabilistic multi-site precipitation downscaling by an expanded Bernoulli-gamma density network. *Journal of Hydrometeorology*. <http://dx.doi.org/10.1175%2F2008JHM960.1>
Intergovernmental Panel on Climate Change (IPCC) (2008), Fourth Assessment Report –AR4. <http://www.ipcc.ch/ipccreports/ar4-syr.htm>

Merritt, W, Alila, Y., Barton, M., Taylor, B., Neilsen, D., and Cohen, S. 2006. Hydrologic response to scenarios of climate change in the Okanagan Basin, British Columbia. *J. Hydrology*. 326: 79-108.

Neilsen, D., Smith, S., Frank, G., Koch, W., Alila, Y., Merritt, W., Taylor, B., Barton, M, Hall, J. and Cohen, S. 2006. Potential impacts of climate change on water availability for crops in the Okanagan Basin, British Columbia. *Can. J. Soil Sci.* 86: 909-924.

Neilsen, D., Duke, G., Taylor, W., Byrne, J.M., and Van der Gulik T.W. (2010). Development and Verification of Daily Gridded Climate Surfaces in the Okanagan Basin of British Columbia. *Canadian Water Resources Journal* 35(2), pp. 131-154. <http://www4.agr.gc.ca/abstract-resume/abstract-resume.htm?lang=eng&id=21183000000448>

Allen, R. G., Pereira, L. S., Raes, D. and Smith, M. 1998. Crop evapotranspiration Guidelines for computing crop water requirements. FAO Irrigation and Drainage Paper 56. United Nations Food and Agriculture Organization. Rome. 100pp

Appendix Tables

Appendix Table A 2003 Water Demand by Crop with Average Management

Appendix Table B 1997 Water Demand by Crop with Average Management

Appendix Table C 2003 Water Demand by Irrigation System with Average Management

Appendix Table D 2003 Water Demand by Soil Texture with Average Management

Appendix Table E 2003 Water Demand by Aquifer with Average Management

Appendix Table F 2003 Management Comparison on Irrigation Demand and Percolation Volumes

Appendix Table G 2003 Percolation Volumes by Irrigation System with Average Management

Appendix Table H 2003 Crop Water Demand for Improved Irrigation System Efficiency and Good Management

Appendix Table I 2003 Water Demand by Animal Type with Average Management

Appendix Table J Climate Change Water Demand Circa 2050 for a High Demand Year with Good Management using Current Crops and Irrigation Systems

Appendix Table K Buildout Crop Water Demand for 2003 Climate Data and Good Management

Appendix Table L Buildout Crop Water Demand for Climate Change Circa 2050 and Good Management

Appendix Table M Buildout Irrigation System Demand for 2003 Climate Data and Good Management

Appendix Table N Buildout Water Demand by Aquifer for 2003 Climate Data and Good Management

Appendix Table A 2003 Water Demand by Crop with Average Management

Water Source	Surface Water			Reclaimed Water			Groundwater			Total		
	Irrigated Area (ha)	Irrigation Demand (m ³)	Avg. Req. (mm)	Irrigated Area (ha)	Irrigation Demand (m ³)	Avg. Req. (mm)	Irrigated Area (ha)	Irrigation Demand (m ³)	Avg. Req. (mm)	Irrigated Area (ha)	Irrigation Demand (m ³)	Avg. Req. (mm)
Apple	0.2	686	432	-	-	-	7.0	43,683	625	7.1	44,369	621
Berry	0.2	639	345	-	-	-	0.1	517	622	0.3	1,156	431
Blueberry	2.3	10,636	467	-	-	-	0.3	1,305	498	2.5	11,942	470
Cherry	0.5	2,692	519	-	-	-	-	-	-	0.5	2,692	519
Forage	13.9	131,512	948	-	-	-	12.4	101,402	815	26.3	232,914	885
Fruit	-	-	-	-	-	-	0.8	4,034	519	0.8	4,034	519
Grape	0.5	2,085	410	-	-	-	11.6	47,115	405	12.1	49,200	405
Nursery Floriculture	-	-	-	-	-	-	6.2	29,573	475	6.2	29,573	475
Nursery Shrubs/Trees	-	-	-	-	-	-	1.1	8,259	751	1.1	8,259	751
Pasture/Grass	2.9	22,630	776	-	-	-	-	-	-	2.9	22,630	776
Raspberry	0.1	328	605	-	-	-	-	-	-	0.1	328	605
Sweetcorn	-	-	-	-	-	-	2.6	12,052	461	2.6	12,052	461
Vegetable	11.2	68,661	611	-	-	-	22.7	138,214	610	33.9	206,875	610
TOTALS	32.1	243,478	758	-	-	-	67.1	412,134	615	99.2	655,612	661

Appendix Table B 1997 Water Demand by Crop with Average Management

Water Source	Surface Water			Reclaimed Water			Groundwater			Total		
	Irrigated Area (ha)	Irrigation Demand (m ³)	Avg. Req. (mm)	Irrigated Area (ha)	Irrigation Demand (m ³)	Avg. Req. (mm)	Irrigated Area (ha)	Irrigation Demand (m ³)	Avg. Req. (mm)	Irrigated Area (ha)	Irrigation Demand (m ³)	Avg. Req. (mm)
Apple	0.2	296	186	-	-	-	7.0	20,066	287	7.1	20,362	285
Berry	0.2	283	153	-	-	-	0.1	227	273	0.3	510	190
Blueberry	2.3	4,724	207	-	-	-	0.3	601	229	2.5	5,324	210
Cherry	0.5	1,189	229	-	-	-	-	-	-	0.5	1,189	229
Forage	13.9	62,863	453	-	-	-	12.4	45,874	369	26.3	108,737	413
Fruit	-	-	-	-	-	-	0.8	1,590	204	0.8	1,590	204
Grape	0.5	609	120	-	-	-	11.6	14,956	129	12.1	15,565	128
Nursery Floriculture	-	-	-	-	-	-	6.2	11,847	190	6.2	11,847	190
Nursery Shrubs/Trees	-	-	-	-	-	-	1.1	3,617	329	1.1	3,617	329
Pasture/Grass	2.9	11,388	390	-	-	-	-	-	-	2.9	11,388	390
Raspberry	0.1	151	279	-	-	-	-	-	-	0.1	151	279
Sweetcorn	-	-	-	-	-	-	2.6	4,280	164	2.6	4,280	164
Vegetable	11.2	33,422	297	-	-	-	22.7	66,683	294	33.9	100,105	295
TOTALS	31.7	114,925	362	-	-	-	64.8	169,740	262	96.5	284,665	295

Appendix Table C 2003 Water Demand by Irrigation System with Average Management

Water Source	Surface Water			Reclaimed Water			Groundwater			Total		
	Irrigated Area (ha)	Irrigation Demand (m ³)	Avg. Req. (mm)	Irrigated Area (ha)	Irrigation Demand (m ³)	Avg. Req. (mm)	Irrigated Area (ha)	Irrigation Demand (m ³)	Avg. Req. (mm)	Irrigated Area (ha)	Irrigation Demand (m ³)	Avg. Req. (mm)
Drip	1.3	7,269	553	-	-	-	6.3	41,452	662	7.6	48,721	643
Flood	-	-	-	-	-	-	0.6	8,603	1,372	0.6	8,603	1,372
Microspray	-	-	-	-	-	-	3.8	16,409	430	3.8	16,409	430
Microsprinkler	0.1	739	819	-	-	-	0.5	3,348	691	0.6	4,086	711
Overtreedrip	2.2	10,537	486	-	-	-	14.4	66,938	464	16.6	77,475	467
Sprinkler	17.9	115,723	647	-	-	-	27.8	174,017	625	45.7	289,740	633
SSGun	5.6	56,527	1,012	-	-	-	5.9	51,249	862	11.5	107,775	935
Travgun	5.0	52,684	1,044	-	-	-	7.7	50,118	655	12.7	102,802	809
TOTALS	32.1	243,478	758	-	-	-	67.1	412,134	615	99.2	655,612	661

Appendix Table D 2003 Water Demand by Soil Texture with Average Management

Water Source	Surface Water			Reclaimed Water			Groundwater			Total		
	Irrigated Area (ha)	Irrigation Demand (m ³)	Avg. Req. (mm)	Irrigated Area (ha)	Irrigation Demand (m ³)	Avg. Req. (mm)	Irrigated Area (ha)	Irrigation Demand (m ³)	Avg. Req. (mm)	Irrigated Area (ha)	Irrigation Demand (m ³)	Avg. Req. (mm)
Loam	6.1	42,852	703	-	-	-	2.0	15,247	773	8.1	58,099	720
Loamy Sand	-	95	941	-	-	-	1.9	9,457	492	1.9	9,553	494
Organic	-	73	402	-	-	-	2.6	11,598	455	2.6	11,671	454
Sand	1.0	10,060	988	-	-	-	1.6	7,893	496	2.6	17,953	688
Sandy Loam	10.6	96,145	903	-	-	-	34.9	221,264	635	45.5	317,408	697
Sandy Loam (defaulted)	0.2	1,250	649	-	-	-	-	224	650	0.2	1,474	649
Silt Loam	3.6	21,740	603	-	-	-	3.3	19,053	578	6.9	40,793	591
Silty Clay Loam	10.5	71,263	678	-	-	-	20.8	127,398	612	31.3	198,661	634
TOTALS	32.1	243,478	758	-	-	-	67.1	412,134	615	99.2	655,612	661

Appendix Table E 2003 Water Demand by Aquifer with Average Management

Water Source	Surface Water			Reclaimed Water			Groundwater			Total		
Water Purveyor	Irrigated Area (ha)	Irrigation Demand (m ³)	Avg. Req. (mm)	Irrigated Area (ha)	Irrigation Demand (m ³)	Avg. Req. (mm)	Irrigated Area (ha)	Irrigation Demand (m ³)	Avg. Req. (mm)	Irrigated Area (ha)	Irrigation Demand (m ³)	Avg. Req. (mm)
1147_South_Central_S	3.1	19,231	629	-	-	-	6.4	42,930	672	9.4	62,161	658
1148_Greenwood	1.5	7,581	497	-	-	-	8.1	35,759	439	9.7	43,340	448
156_Ganges_Harbour	-	-	-	-	-	-	0.4	2,710	634	0.4	2,710	634
157_Fulford_Harbour	1.2	17,965	1,460	-	-	-	9.1	50,115	552	10.3	68,081	660
721_North_SSI_Aquifer	10.1	65,463	647	-	-	-	24.0	142,844	594	34.2	208,306	610
722_North_Central_SSI	8.5	75,667	888	-	-	-	9.6	60,937	633	18.1	136,604	753
723_South_SSI	7.6	57,571	753	-	-	-	9.4	76,839	821	17.0	134,410	791
TOTALS	32.1	243,478	758	-	-	-	67.1	412,134	615	99.2	655,612	661

Appendix Table F 2003 Management Comparison on Irrigation Demand and Percolation Volumes

Water Source	Surface Water				Reclaimed Water				Groundwater				Total				
Agriculture Management	Irrigated Area (ha)	Irrigation Demand (m ³)	Avg. Req. (mm)	Deep Percolation (m ³)	Irrigated Area (ha)	Irrigation Demand (m ³)	Avg. Req. (mm)	Deep Percolation (m ³)	Irrigated Area (ha)	Irrigation Demand (m ³)	Avg. Req. (mm)	Deep Percolation (m ³)	Irrigated Area (ha)	Irrigation Demand (m ³)	Avg. Req. (mm)	Deep Percolation (m ³)	Percolation (m ³ /ha)
Poor	32.1	250,649	781	38,526	-	-	-	-	67.1	421,144	628	58,137	99.2	671,793	678	96,663	974
Avg	32.1	243,478	758	31,355	-	-	-	-	67.1	412,134	615	49,127	99.2	655,612	661	80,481	811
Good	32.1	236,307	736	24,184	-	-	-	-	67.1	403,124	601	40,116	99.2	639,431	645	64,300	648

Appendix Table G 2003 Percolation Volumes by Irrigation System with Average Management

Water Source	Surface Water			Reclaimed Water			Groundwater			Total			
	Irrigated Area (ha)	Irrigation Demand (m ³)	Deep Percolation (m ³)	Irrigated Area (ha)	Irrigation Demand (m ³)	Deep Percolation (m ³)	Irrigated Area (ha)	Irrigation Demand (m ³)	Deep Percolation (m ³)	Irrigated Area (ha)	Irrigation Demand (m ³)	Deep Percolation (m ³)	Percolation (m ³ /ha)
Drip	1.3	7,269	886	-	-	-	6.3	41,452	6,231	7.6	48,721	7,116	936
Flood	-	-	-	-	-	-	0.6	8,603	1,985	0.6	8,603	1,985	3,308
Microspray	-	-	-	-	-	-	3.8	16,409	1,694	3.8	16,409	1,694	446
Microsprinkler	0.1	739	179	-	-	-	0.5	3,348	644	0.6	4,086	823	1,372
Overtreedrip	2.2	10,537	737	-	-	-	14.4	66,938	5,568	16.6	77,475	6,305	380
Sprinkler	17.9	115,723	12,864	-	-	-	27.8	174,017	21,627	45.7	289,740	34,491	755
SSGun	5.6	56,527	10,595	-	-	-	5.9	51,249	6,595	11.5	107,775	17,189	1,495
Travgun	5.0	52,684	6,094	-	-	-	7.7	50,118	4,783	12.7	102,802	10,877	856
TOTALS	32.1	243,478	31,355	-	-	-	67.1	412,134	49,127	99.2	655,612	80,481	811

Appendix Table H 2003 Crop Water Demand for Improved Irrigation System Efficiency and Good Management

Water Source	Surface Water			Reclaimed Water			Groundwater			Total		
	Irrigated Area (ha)	Irrigation Demand (m ³)	Avg. Req. (mm)	Irrigated Area (ha)	Irrigation Demand (m ³)	Avg. Req. (mm)	Irrigated Area (ha)	Irrigation Demand (m ³)	Avg. Req. (mm)	Irrigated Area (ha)	Irrigation Demand (m ³)	Avg. Req. (mm)
Apple	34.4	183,742	534	-	-	-	15.2	79,744	526	49.6	263,486	531
Berry	7.1	34,056	483	-	-	-	11.8	65,709	557	18.9	99,765	529
Cherry	152.4	1,091,653	716	-	-	-	110.4	852,771	772	262.8	1,944,424	740
Forage	677.3	5,590,454	825	-	-	-	2,128.1	16,226,102	762	2,805.5	21,816,556	778
Fruit	10.1	57,466	569	-	-	-	3.6	23,910	666	13.7	81,376	594
Golf	14.9	123,121	825	-	-	-	112.0	989,829	884	127.0	1,112,950	877
Grape	23.8	81,594	343	-	-	-	14.1	62,278	441	37.9	143,872	379
Nursery	2.7	18,385	670	-	-	-	149.8	1,140,174	761	152.5	1,158,559	760
Nursery Floriculture	1.0	5,013	493	-	-	-	-	-	-	1.0	5,013	493
Recreational Turf	-	-	-	-	-	-	3.2	24,341	760	3.2	24,341	760
Turf Farm	-	-	-	-	-	-	24.0	229,999	957	24.0	229,999	957
Vegetable	52.7	206,430	392	-	-	-	79.5	318,301	400	132.2	524,731	397
TOTALS	976.5	7,391,915	757	-	-	-	2,651.7	20,013,157	755	3,628.3	27,405,072	755

Appendix Table I 2003 Water Demand by Animal Type	
Animal Type	Demand (m ³)
Beef	10,092
Dairy - dry	9
Dairy - milking	24
Goats	1,562
Horses	21,882
Poultry - broiler	589
Poultry - laying	312
Sheep	13,257
Swine	1,054
TOTALS	48,781

Appendix Table J Climate Change Water Demand Circa 2050 for High Demand Year with Good Management Using Current Crops and Irrigation Systems												
Climate Change	Access1 rcp85			CanESM2 rcp85			cnrm-cm5 rcp45			Average		
Year	Irrigated Area (ha)	Irrigation Demand (m ³)	Avg. Req. (mm)	Irrigated Area (ha)	Irrigation Demand (m ³)	Avg. Req. (mm)	Irrigated Area (ha)	Irrigation Demand (m ³)	Avg. Req. (mm)	Irrigated Area (ha)	Irrigation Demand (m ³)	Avg. Req. (mm)
2053	99.2	679,792	686	99.2	788,545	795	99.2	457,836	462	99.2	642,058	648
2056	99.2	628,919	634	99.2	485,931	490	99.2	349,613	353	99.2	488,154	492
2059	99.2	611,461	617	99.2	752,632	759	99.2	462,638	467	99.2	608,910	614
Average	99.2	640,057	646	99.2	675,703	681	99.2	423,362	427	99.2	579,707	585

Appendix Table K Buildout Crop Water Demand for 2003 Climate Data with Good Management

Water Source	Surface Water			Reclaimed Water			Groundwater			Total		
	Irrigated Area (ha)	Irrigation Demand (m ³)	Avg. Req. (mm)	Irrigated Area (ha)	Irrigation Demand (m ³)	Avg. Req. (mm)	Irrigated Area (ha)	Irrigation Demand (m ³)	Avg. Req. (mm)	Irrigated Area (ha)	Irrigation Demand (m ³)	Avg. Req. (mm)
Apple	0.2	670	422	-	-	-	7.0	42,943	614	7.1	43,612	610
Berry	0.2	631	341	-	-	-	0.1	506	608	0.3	1,137	424
Blueberry	2.3	10,393	456	-	-	-	0.3	1,276	486	2.5	11,668	459
Cherry	0.5	2,630	507	-	-	-	-	-	-	0.5	2,630	507
Forage	97.6	850,295	871	-	-	-	12.4	98,119	789	110.0	948,413	862
Fruit	-	-	-	-	-	-	0.8	4,034	519	0.8	4,034	519
Grape	0.5	2,004	394	-	-	-	12.0	47,617	396	12.5	49,621	396
Nursery Floriculture	-	-	-	-	-	-	6.2	28,989	466	6.2	28,989	466
Nursery Shrubs/Trees	-	-	-	-	-	-	1.1	8,085	735	1.1	8,085	735
Pasture/Grass	2.9	22,309	765	-	-	-	1.0	8,117	822	3.9	30,426	779
Raspberry	0.1	327	604	-	-	-	-	-	-	0.1	327	604
Sweetcorn	-	-	-	-	-	-	2.6	11,898	455	2.6	11,898	455
Vegetable	438.9	1,905,954	434	-	-	-	22.7	135,184	597	461.5	2,041,138	442
TOTALS	543.4	2,798,821	515	-	-	-	68.4	412,745	603	611.9	3,211,566	525

Appendix Table L Buildout Crop Water Demand for Climate Change Data Circa 2050 and Good Management

Climate Change	Access1 rcp85			CanESM2 rcp85			cnrm-cm5 rcp45			Average		
	Irrigated Area (ha)	Irrigation Demand (m ³)	Avg. Req. (mm)	Irrigated Area (ha)	Irrigation Demand (m ³)	Avg. Req. (mm)	Irrigated Area (ha)	Irrigation Demand (m ³)	Avg. Req. (mm)	Irrigated Area (ha)	Irrigation Demand (m ³)	Avg. Req. (mm)
Year												
2053	611.9	3,005,978	491	611.9	3,810,678	623	611.9	2,108,640	345	611.9	2,975,099	486
2056	611.9	2,589,182	423	611.9	2,320,381	379	611.9	1,712,470	280	611.9	2,207,344	361
2059	611.9	2,884,224	471	611.9	3,580,442	585	611.9	2,268,429	371	611.9	2,911,032	476
Average	611.9	2,826,461	462	611.9	3,237,167	529	611.9	2,029,846	332	611.9	2,697,825	441

Appendix Table M Buildout Irrigation System Demand for 2003 Climate Data and Good Management

Water Source	Surface Water			Reclaimed Water			Groundwater			Total		
Agriculture Irrigation System	Irrigated Area (ha)	Irrigation Demand (m ³)	Avg. Req. (mm)	Irrigated Area (ha)	Irrigation Demand (m ³)	Avg. Req. (mm)	Irrigated Area (ha)	Irrigation Demand (m ³)	Avg. Req. (mm)	Irrigated Area (ha)	Irrigation Demand (m ³)	Avg. Req. (mm)
Drip	321.8	1,163,325	362	-	-	-	6.3	41,006	655	328.0	1,204,331	367
Flood	-	-	-	-	-	-	0.6	8,603	1,372	0.6	8,603	1,372
Microspray	-	-	-	-	-	-	3.8	15,916	417	3.8	15,916	417
Microsprinkler	0.1	739	819	-	-	-	0.5	3,288	678	0.6	4,026	700
Overtreedrip	2.2	10,301	475	-	-	-	14.8	67,268	454	17.0	77,570	456
Pivot	38.7	318,744	823	-	-	-	-	-	-	38.7	318,744	823
Sprinkler	159.1	1,096,104	689	-	-	-	27.8	170,349	612	187.0	1,266,453	677
SSGun	5.6	53,916	966	-	-	-	5.9	49,051	825	11.5	102,967	893
Ssovertree	-	-	-	-	-	-	1.0	8,117	822	1.0	8,117	822
Travgun	16.0	155,692	976	-	-	-	7.7	49,148	642	23.6	204,840	868
TOTALS	543.4	2,798,821	515	-	-	-	68.4	412,745	603	611.9	3,211,566	525

Appendix Table N Buildout Demand by Aquifer for 2003 Climate Data and Good Management

Water Source	Surface Water			Reclaimed Water			Groundwater			Total		
Water Purveyor	Irrigated Area (ha)	Irrigation Demand (m ³)	Avg. Req. (mm)	Irrigated Area (ha)	Irrigation Demand (m ³)	Avg. Req. (mm)	Irrigated Area (ha)	Irrigation Demand (m ³)	Avg. Req. (mm)	Irrigated Area (ha)	Irrigation Demand (m ³)	Avg. Req. (mm)
1147_South_Central_S	104.8	537,619	513	-	-	-	6.8	43,608	643	111.5	581,227	521
1148_Greenwood	6.7	44,240	665	-	-	-	8.1	35,221	433	14.8	79,461	537
155_Walker_Hook	0.4	1,970	460	-	-	-	-	-	-	0.4	1,970	460
156_Ganges_Harbour	11.9	42,708	360	-	-	-	0.4	2,656	621	12.3	45,364	369
157_Fulford_Harbour	48.1	303,467	630	-	-	-	9.1	48,912	539	57.2	352,379	616
721_North_SSI_Aquifer	185.6	985,120	531	-	-	-	25.0	148,097	592	210.6	1,133,216	538
722_North_Central_SSI	153.6	700,842	456	-	-	-	9.6	60,106	624	163.2	760,947	466
723_South_SSI	31.3	178,925	571	-	-	-	9.4	74,146	792	40.7	253,071	622
TOTALS	543.4	2,798,820	515	-	-	-	68.4	412,745	603	611.9	3,211,566	525